

Construction Kick-off Community Meeting for Jimmie Davis Bridge

State Project No. H.001779

Federal Aid Project No. H001779

Barksdale Baptist Church
1714 Jimmie Davis Highway
Bossier City, LA

April 25, 2024

5:00 p.m. - 7:00 p.m.



U.S. Department of Transportation
**Federal Highway
Administration**

Objective of Public Meeting

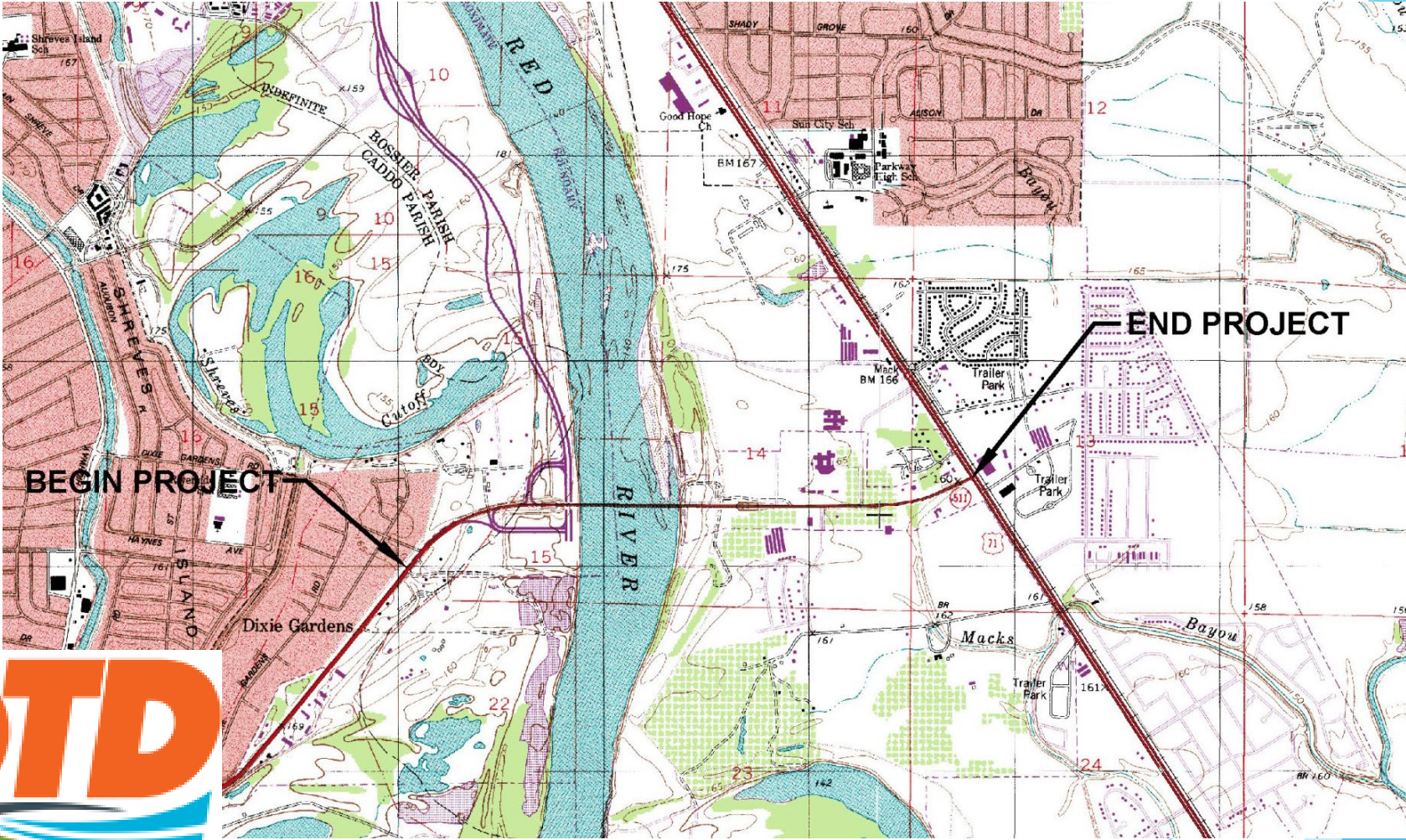
- ▶ Present construction timelines
- ▶ Present construction detours
- ▶ Provide information on closures to the Arthur Ray Teague Running Trail and get comments and feedback concerning the trail



Project Description

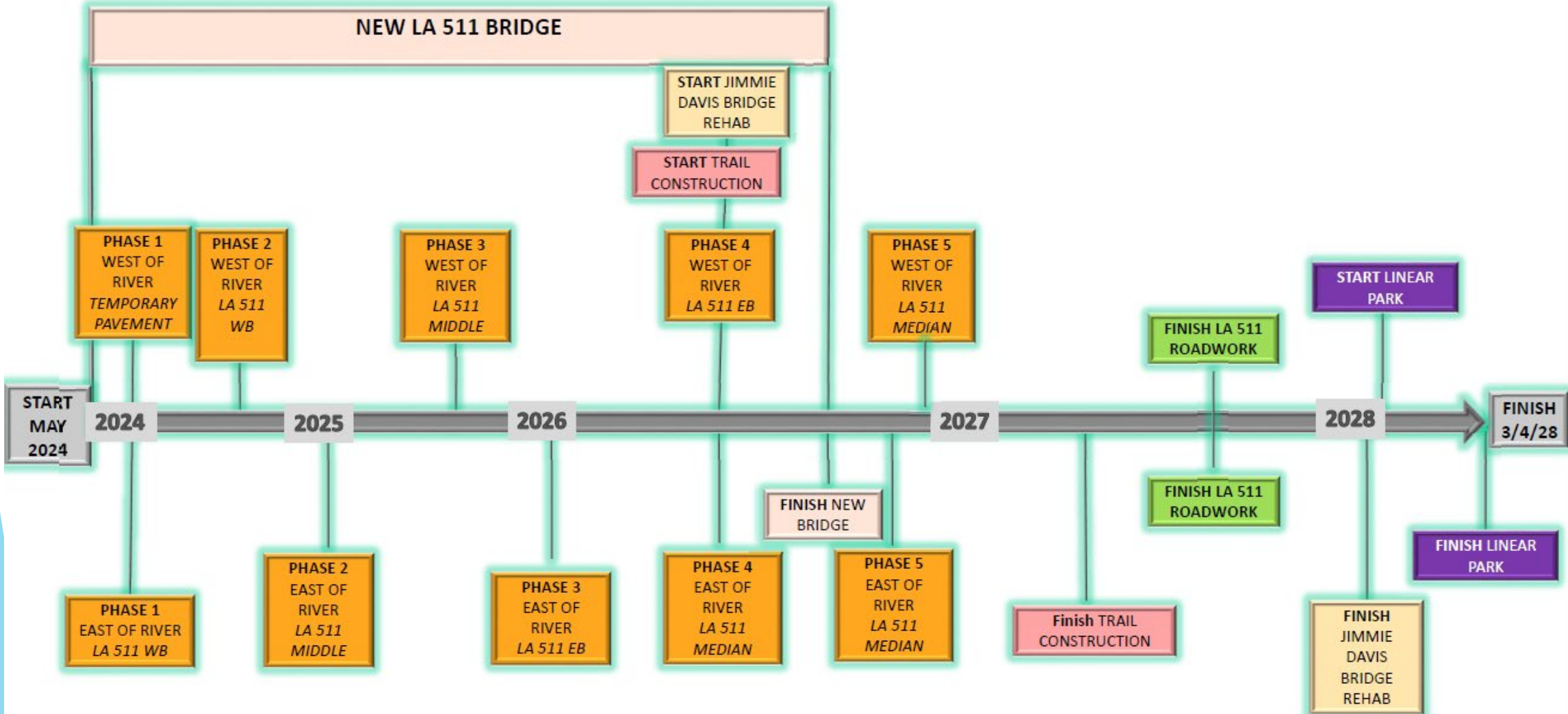
- LADOTD Design-Build Project to Design and Construct a new four lane bridge structure over the Red River.
- Convert LA 511 from the bridge to US 71 into a median-separated corridor.
- Design and construct full-access interchange connections with LA 511 at both Arthur Ray Teague Parkway and Clyde Fant Memorial Parkway.
- Rehabilitate the existing bridge structure and repurpose the existing Jimmie Davis Bridge into a Linear Park.
- Design and construct bicycle and pedestrian facilities crossing the Red River on the existing bridge connecting to existing trails and new trails on either side.
- Scheduled Project Completion: March 17, 2028

Project Location



LOUISIANA DEPARTMENT OF
TRANSPORTATION & DEVELOPMENT

Project Timeline



Traffic Management

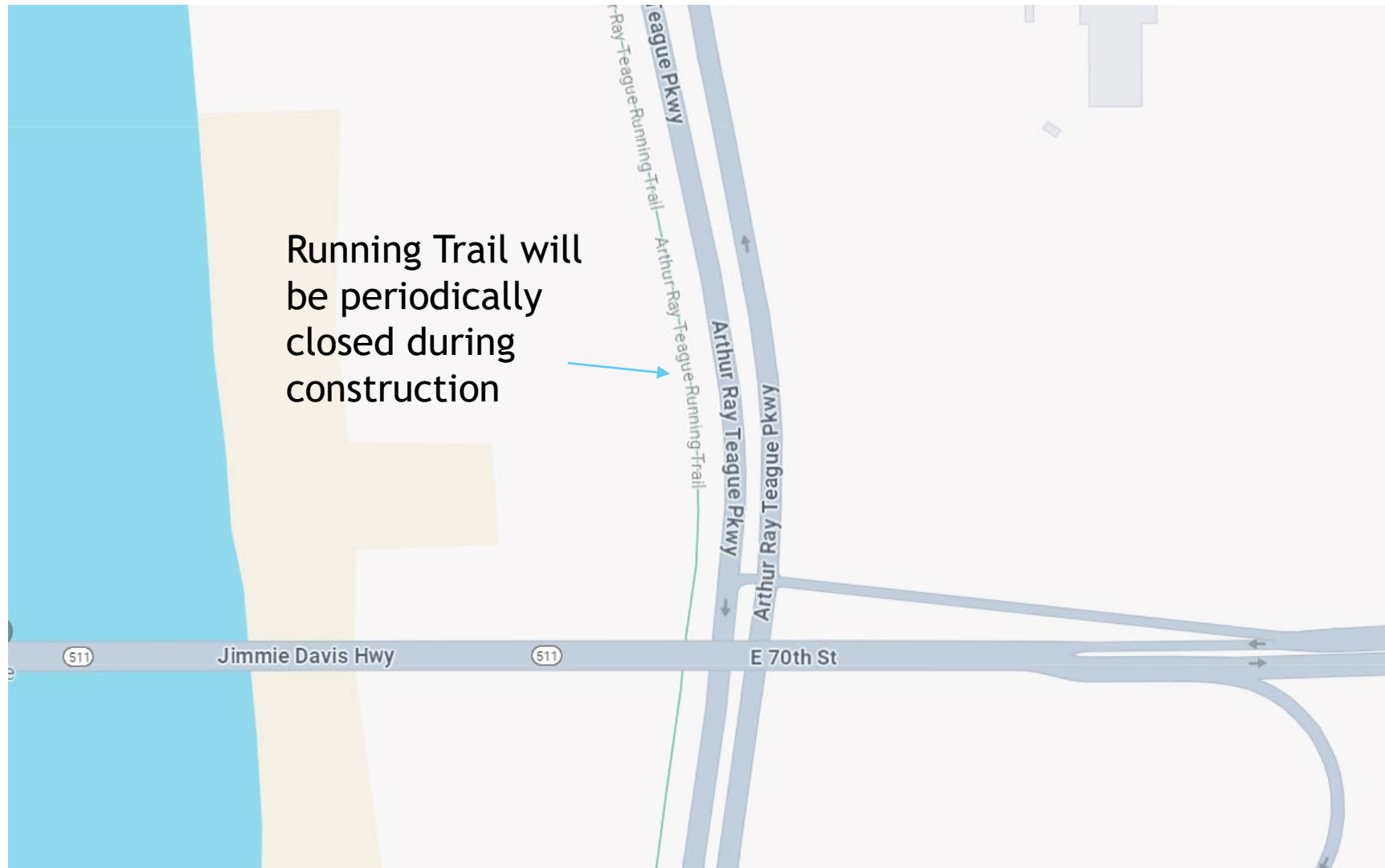
- Roadway closures are required for the protection of motorists and workers during pile driving operations, placement of concrete, and other activities.
- Intermittent ramp closures and intermittent lane closures are needed to maintain traffic flow. This includes temporary flagging along Arthur Ray Teague Parkway for truck access to the construction area.
- Modified signal timings are required at the intersections of LA 511 at Brookshire Arena Drive, LA 511 at Sunflower Blvd, and LA 511 at US 71. A temporary signal is required at the LA 511 westbound ramp at Clyde Fant Memorial Parkway.
- Lane closures, detours, and diversions will be scheduled around events being held at the Brookshire Arena and must be coordinated with LADOTD's District Traffic Operations Engineer for acceptance.
- Detailed detour exhibits are placed throughout the meeting room and on the JDB DOTD project webpage.

Section 4(f) de Minimus

- ▶ Section 4(f) refers to a provision in the United States Department of Transportation Act of 1966. This section provides protection to certain publicly owned parks, recreational areas, wildlife and waterfowl refuges, and historic sites from being used for federally funded transportation projects unless there is no feasible or prudent alternative and all possible measures have been taken to minimize harm to the protected resource
- ▶ The Arthur Ray Teague running trail will be temporarily closed at times during construction of the project
- ▶ There is a detailed exhibit in the meeting room and comments are being requested on the trail closures and detours



Section 4(f) de Minimus



Section 4(f) de Minimus

Phase 1: This phase includes construction of the new Jimmie Davis bridge. During this phase flaggers will be used to direct construction vehicles on and off the Arthur Ray Teague Parkway “ART”. The flaggers will have a dual purpose. One is to let vehicles know when it is safe to cross the pedestrian trail and the other is to merge construction vehicles on and off ART. Also during phase 1, flaggers will control any pedestrian traffic on the trail to ensure safe passage through the work zone. Short intermittent closures of the trail may be necessary to facilitate construction of the bridge in phase 1. The following is a list of the different types of closures that will be required:

1. Closure to set girders over ART – 20 minutes for each girder.
2. Closure to let a vehicle pass over the trail. – Approx 5 minutes for each vehicle.
3. Closure to drive a pile close to the trail. – Approx 1 hour per pile.

Phases 2-4 are the same as phase 1 for the pedestrian trail.

Phase 5: The detour for the pedestrian trail will be removed in this phase and the permanent trail will be constructed. The trail will be closed for 3 weeks while trail reconstruction is taking place.

Recommend full closure of the trail for duration of girder hanging, deck pours/removal, and pile driving pours etc. For instance hanging girders – overnight closure, pile driving adjacent to the trail-day time closures while driving operations are underway. Also will deck removal/pours, girder hanging be at night?

Seems like night time closures will not be an impact.

Mention this accommodation in phase 1

Section 4(f) de Minimus

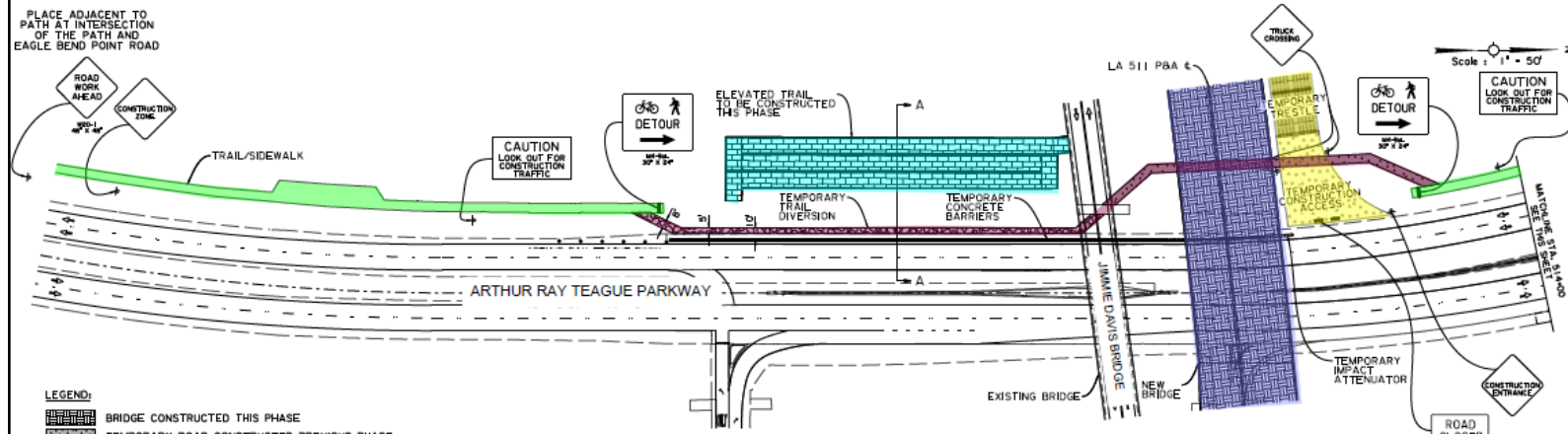
Phase 1: This phase includes construction of the new Jimmie Davis bridge. During this phase flaggers will be used to direct construction vehicles on and off the Arthur Ray Teague Parkway “ART” from the construction access road. The flaggers will have a dual purpose. One is to let construction vehicles know when it is safe to cross the pedestrian trail and the other is to merge construction vehicles on and off ART. Also during phase 1, flaggers will control any pedestrian traffic on the trail to ensure safe passage through the work zone. Short intermittent closures of the trail may be necessary to facilitate construction of the bridge in phase 1. The following is a list of the different types of closures that will be required:

1. Closure to set girders over ART – Nighttime closure
2. Closure to let a construction vehicle pass over the trail. – Approx 5 minutes for each vehicle.
3. Closure to drive a pile close to the trail. – Approx 1 hour per pile.

Phases 2-4 are the same as phase 1 for the pedestrian trail.

Phase 5: The detour for the pedestrian trail will be removed in this phase and the permanent trail will be constructed. The trail will be closed within the project limits for approximately 3-4 weeks while trail reconstruction is taking place.

Section 4(f) de Minimus

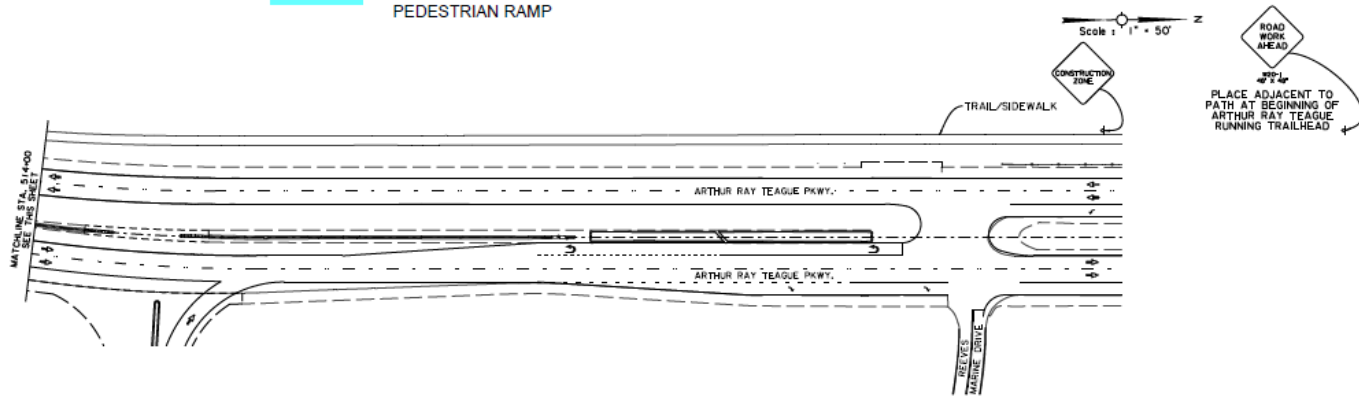


- LEGEND:**
- BRIDGE CONSTRUCTED THIS PHASE
 - TEMPORARY ROAD CONSTRUCTED PREVIOUS PHASE
 - TEMPORARY ROAD CONSTRUCTED THIS PHASE
 - TEMPORARY CONCRETE BARRIERS
 - CHANNELIZING DEVICES
 - DIRECTION OF VEHICULAR TRAVEL
 - TYPE III BARRICADE

- NEW BRIDGE UNDER CONSTRUCTION
- CONSTRUCTION ACCESS ROAD AND BRIDGE
- ARTHUR RAY TEAGUE RUNNING TRAIL
- TRAIL DIVERSION
- NEW ELEVATED BICYCLE AND PEDESTRIAN RAMP

NOTES:

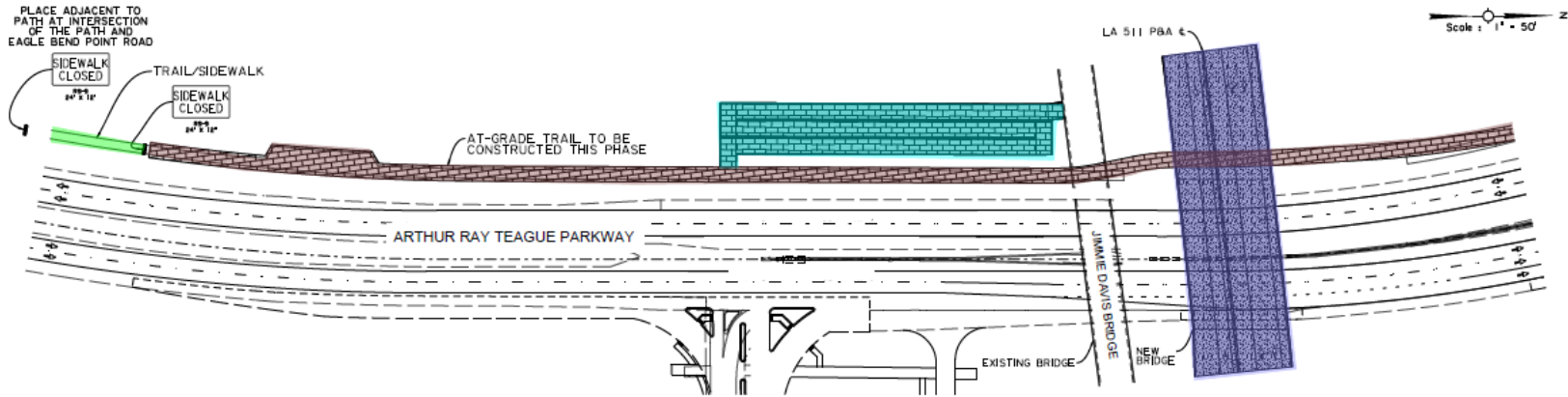
1. CONSTRUCT TEMPORARY TRAIL DIVERSION PAVEMENT IN ORDER TO KEEP TRAIL OPEN WHILE CONSTRUCTING NEW ELEVATED TRAIL.
2. FLAGGER TO BE PRESENT WHEN TRUCKS ARE ENTERING AND EXITING HAUL ROAD/TRESTLE TO FACILITATE SAFE PASSAGE OF TRAIL USERS.



SHEET NUMBER 2
 PHASE 2 - ART TRAIL EXHIBIT

 HUYAL & ASSOC.

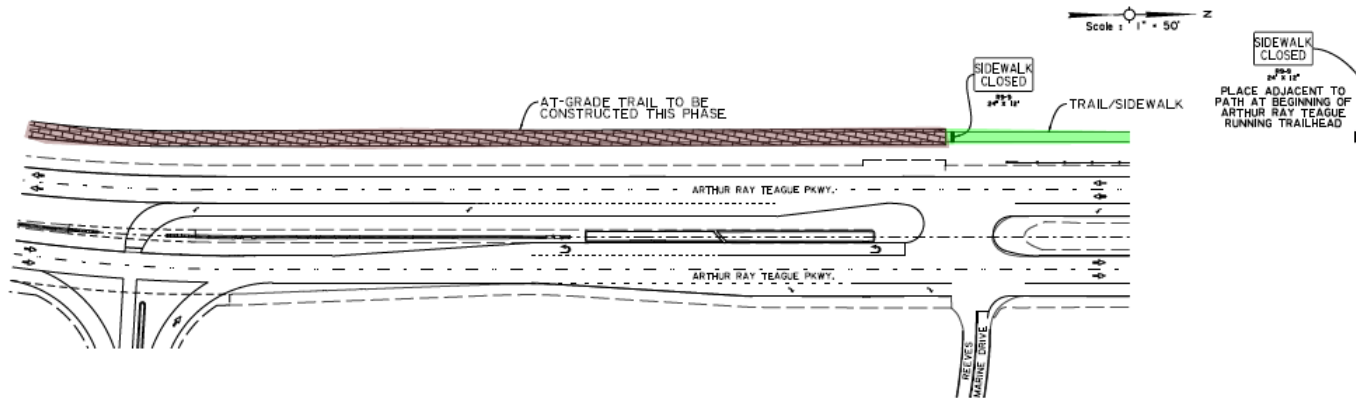
Section 4(f) de Minimus



- LEGEND:**
- BRIDGE CONSTRUCTED PREVIOUS PHASE
 - TRAIL CONSTRUCTED PREVIOUS PHASE
 - TRAIL CONSTRUCTED THIS PHASE
 - DIRECTION OF VEHICULAR TRAVEL
 - TYPE III BARRICADE

TRAIL CLOSED FOR RECONSTRUCTION FOR AN ESTIMATED 3 WEEKS DURING THE OVERALL PROJECT PHASE 4

- NEW BRIDGE CONSTRUCTION COMPLETE
- NEW ELEVATED BICYCLE AND PEDESTRIAN RAMP
- ARTHUR RAY TEAGUE RUNNING TRAIL
- TRAIL CLOSED FOR RECONSTRUCTION



SHEET NUMBER 3
 PHASE 3 - ART TRAIL EXHIBIT

 HUVAL & ASSOC.

How You Can Help?

- ▶ Sign-in tonight and review all materials.
- ▶ Speak with a team member about your concerns.
- ▶ Provide us with your written comments concerning the temporary closure and detour of the *Arthur Ray Teague running trail*.



Project Webpage

- ▶ All materials and exhibits presented tonight are available on the DOTD Jimmie Davis Bridge Project webpage.
- ▶ Scan the QR code with your phone's camera to get to the project webpage.

