



I-20 Major Rehabilitation Project – Bossier & Caddo Parishes

Queue Detection System Information

The Louisiana Department of Transportation and Development is implementing an innovative queue detection system for the I-20 major rehabilitation project in Bossier and Caddo Parishes. In traffic, a vehicle is considered “queued” when it is approaching within one car length of a stopped vehicle and is itself about to stop, creating a line of congestion.

The Queue Detection System is a customizable set of digital message boards and radar sensors that work in real time to alert motorists of current traffic conditions. The message boards automatically update based on changing conditions, such as slowed or stopped traffic as the result of a construction zone.



Numerous radar sensors and message boards are placed along various routes – such as I-20, I-220, I-49 and LA 3132 - as part of the I-20 rehabilitation project. These sensors determine vehicle speeds and gaps in traffic in order to provide valuable information to a driver who is approaching the work zone.

The benefits of the system are **two-fold**:

- Improvement in the safety of motorists who may be encountering an unexpected construction zone with slowing/stopped traffic
- More efficient flow of traffic because drivers are informed and prepared to utilize alternate routes

The below diagram provides a general overview of how the system works when it is installed along the roadway approaching a work zone.

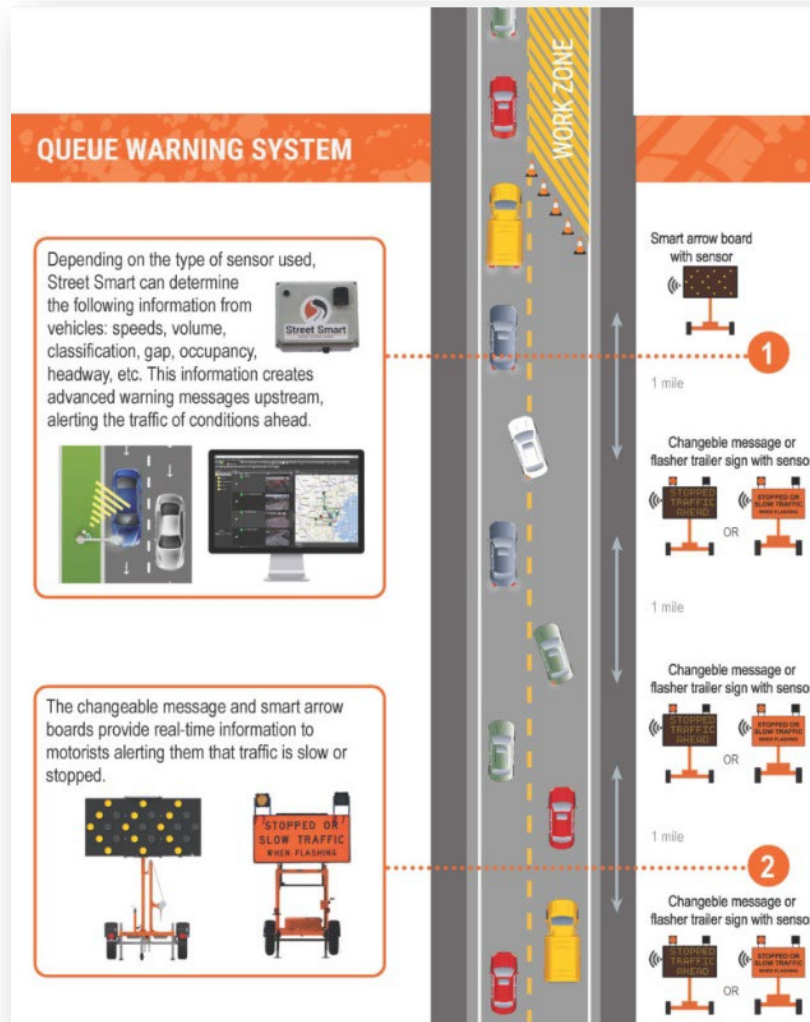


Image source: Street Smart

Motorists are continually urged to pay attention to advanced warning signs along the roadway that are signaling to drivers to decrease their speed and be mindful that they may be encountering slow or stopped traffic. Never drive while distracted or impaired.