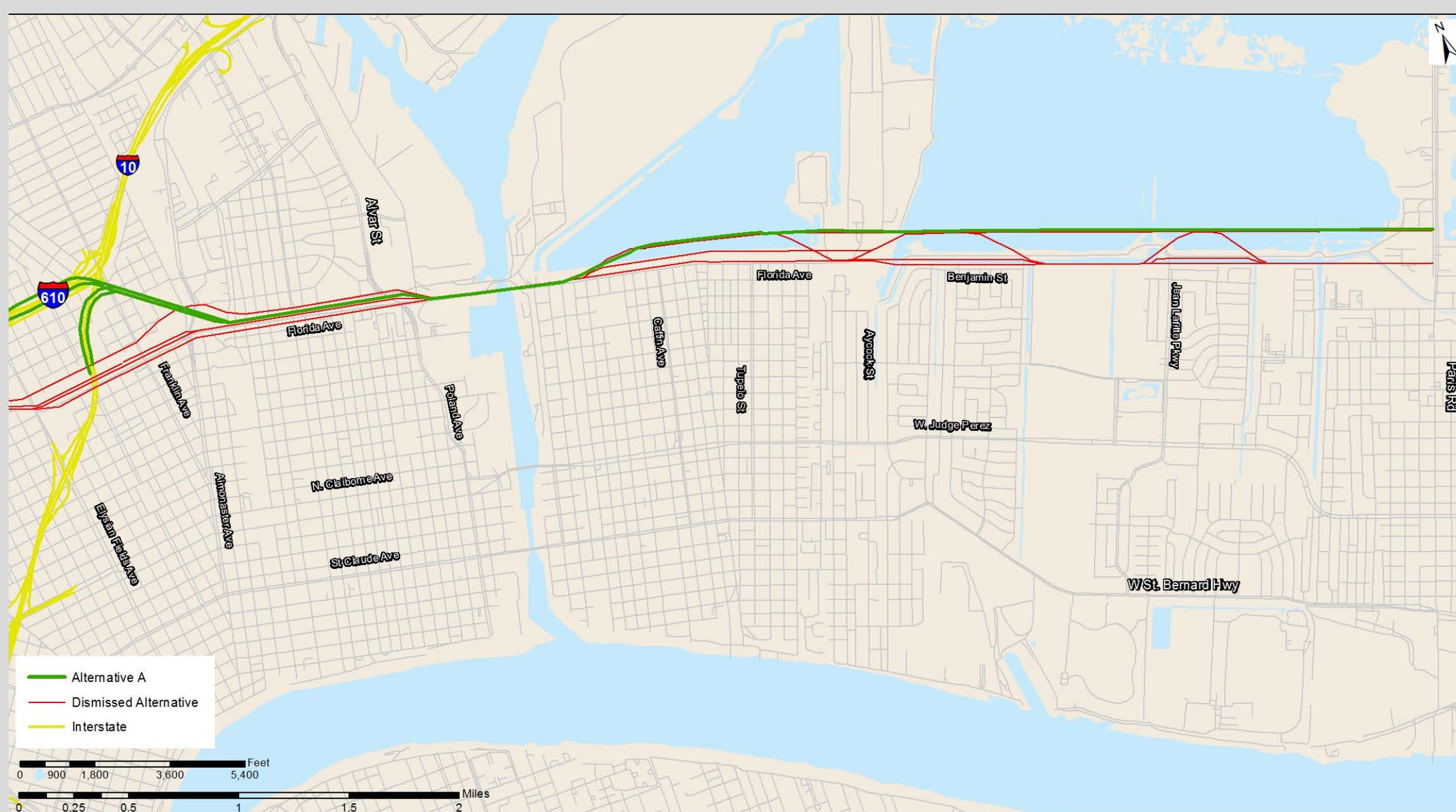


1986 Corridor Study



11 Alternatives Analyzed

Selected Alternative:

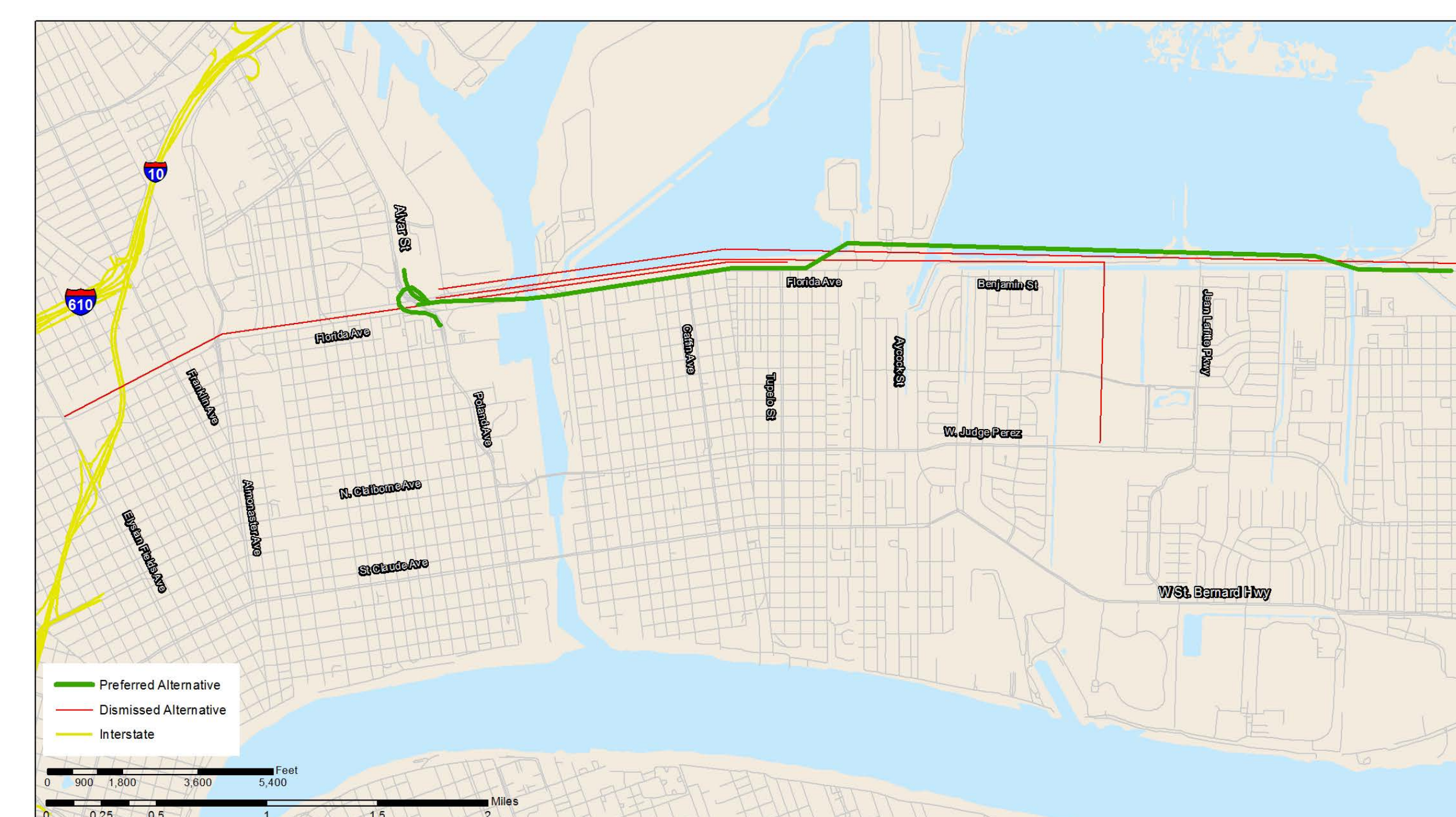
- An elevated expressway with connections to I-10/ 610 and extending to Paris Road in St . Bernard.
- A high-rise, fixed span crossing of the Industrial Canal.
- New right-of-way acquired in the modified marsh north of the Florida Avenue/Forty Arpent Canal line in St . Bernard Parish.

18 Alternatives Analyzed

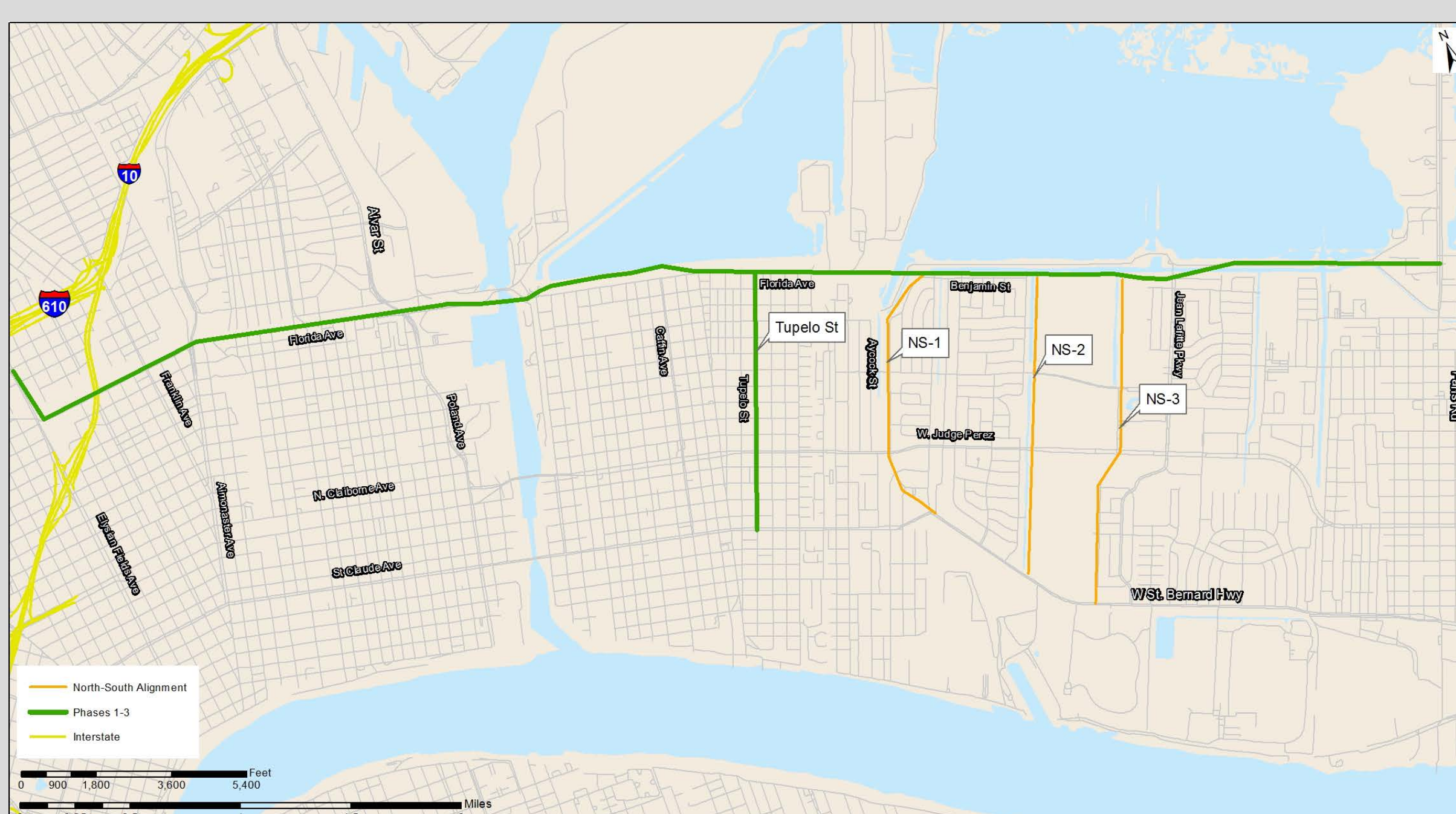
Proposed Action

- APF-3: Alvar/Poland to Paris Road, Fixedspan Bridge, North of Levee East of Tupelo Street.
- Consensus among the neighborhood groups and elected officials.
- Scored well in evaluation of the technical criteria, including traffic impacts, access, capacity and use of bridge structures and roadways, hurricane evacuation, operation and maintenance cost, visual and noise impacts, and utility and infrastructure relocation.

2007 Environmental Assessment



2013 Stage 0 Feasibility Study



Evaluation Criteria	Tupelo Street	N-S Build Alternatives			Florida Ave to Elysian Fields Ave		Florida Ave (East)
		N-S Alternative 1	N-S Alternative 2	N-S Alternative 3	Florida Ave (West)	Elevated Intersection Option	Caffin Ave to Paris Rd
Total Estimated Cost (2013 Cost Opinion)	\$6.4 Million	\$22 - 28 Million			\$56 Million - 64 Million		\$93 Million

Evaluation Criteria	Bridge Alternative Scenarios				
	Movable Bridge A	Movable Bridge B	Fixed Bridge A	Fixed Bridge B	Fixed Bridge C
Vertical Clearance over the IHNC in Closed Position (feet)	75	85	156	156	156
Reliability	Fair	Fair	Good	Good	Good
Operation and Maintenance Cost	Medium	Medium	Low	Low	Low
Total Estimated Cost (2013 Cost Opinion)	\$162 - 166 Million			\$208 - 271 Million	