

Project Information Handout



LA 447 Corridor Study Stage 1- Environmental Assessment

State Project No. H.005734

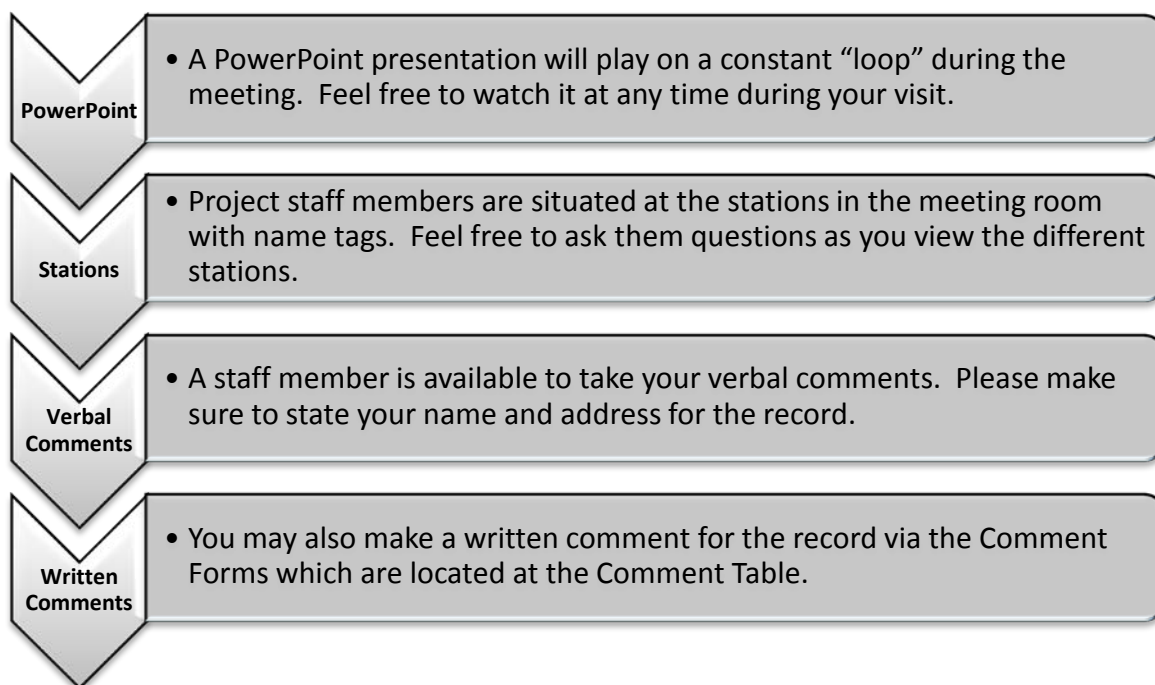
Public Informational Meeting

Livingston Parish Literacy and Technology Center

Thursday, March 31, 2016

4:00 PM - 7:00 PM

OPEN HOUSE MEETING FORMAT:



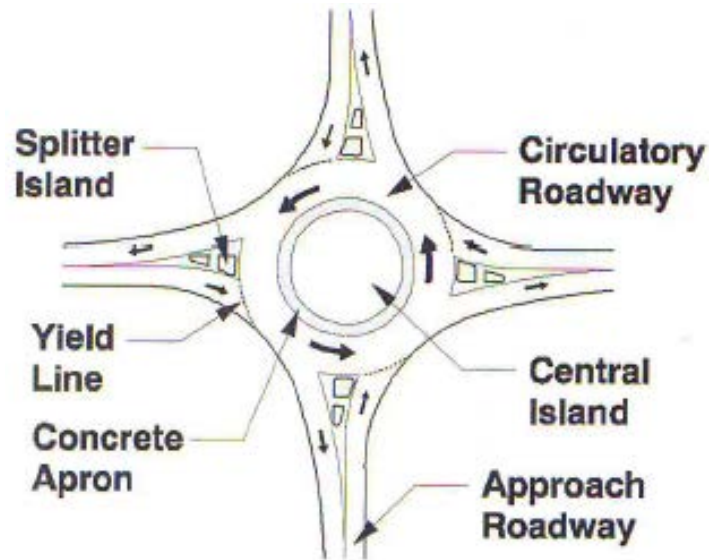
PROJECT OVERVIEW:

This project includes three alternatives: Alternative 1- Roundabout, Alternative 2- R-Cut, and Alternative 3- No-Build. Alternatives are to include:

- Partial Cloverleaf Ramps at I-12
- Widening of I-12 Overpass
- Realignment of existing roadway between LA 16 and Crotwell Road.
- Intersection Improvements at various locations
- Widening of existing roadways at various locations
- Relocating intersection at Milton Lane/ Miller Road

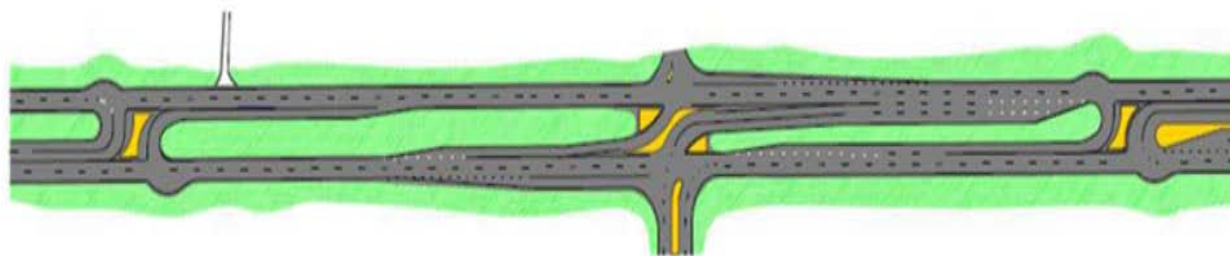
Thank you for your attendance! Please do not forget to provide input at our comment table!

What are Roundabouts?



- Roundabouts are one-way, circular intersections designed to improve safety and efficiency for motorists, bicyclists, and pedestrians.
- In a roundabout, traffic flows through a center island counterclockwise.
- A roundabout redirects some of the conflicting traffic, such as left turns, which cause crashes at traditional intersections. This is because drivers enter and exit the roundabout through a series of right-hand turns.
- Benefits of Roundabouts:
 - Greater safety is achieved primarily by slower speeds and the elimination of more severe crashes.
 - Operations are improved by smooth-flowing traffic with less stop-and-go than a signed intersection.
 - Aesthetics are enhanced by the opportunity for more landscaping and less pavement.
- Roundabouts save lives:
 - Reduce fatalities by up to 90%
 - Reduce injury crashes by up to 76%
 - Reduce pedestrian crashes by up to 30% to 40%
 - Create up to 75% fewer conflict points than a four-way intersection. Conflict points are any point where the paths of two through or turning vehicles diverge, merge, or cross.

What is an R-CUT?

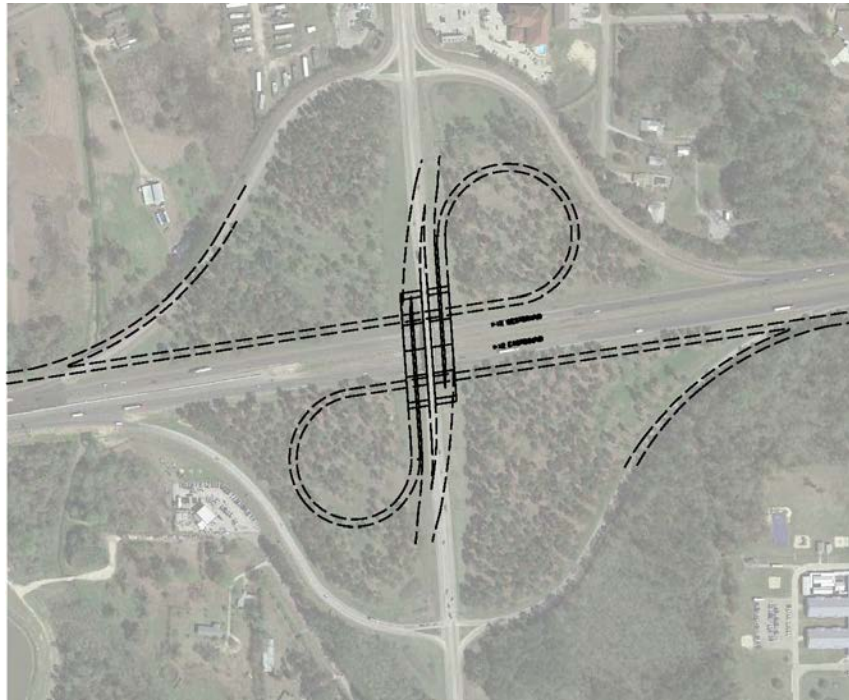


Restricted Crossing U-Turn Intersection

The R-CUT concept is a reconfiguration of the traditional intersection that is used in different parts of the country to improve traffic flow. DOTD has begun using this concept at specific locations across Louisiana.

- The R-CUT concept is a method that safely and efficiently manages high traffic volumes at intersections with multiple approaches along a divided highway. The R-CUT functions by redirecting through- and left-turning traffic on the side street approach to turn right, proceed to the nearby U-turn, and then return to its original course.
- Benefits of R-CUT:
 - Improved Safety: R-CUTs reduce the risk of crashes and specifically the risk of severe crashes such as side-collisions or T-bone type accidents.
 - Less Travel Time: The R-CUT optimizes the capacity of our existing roadway and reduces wait time for left-turning traffic.
 - Economically Beneficial: From an economic view point, the superstreet provides the State with an effective tool for reducing congestion while at the same time reducing construction costs.

Partial Cloverleaf Interchange at I-12



Proposed Relocated Intersection



Comment Form
LA 447 Corridor Study
Stage 1 Environmental Assessment (EA)

State Project No. H.005734

Public Meeting

Livingston Parish Literacy and Technology Center

March 31, 2016

4:00 PM - 7:00 PM

Your comments are greatly appreciated. Please write your thoughts below and bring to the comment table. In addition, you can mail or email this completed form to the address shown at the bottom of this page or fax to (225) 213-1244. Thanks for your input.

Comments:

SEND COMMENTS TO:

Kara K. Moree, CFM

CB&I

4171 Essen Lane

Baton Rouge, LA 70809

kara.moree@CBI.com

Please provide your contact information:

Name: _____

Address: _____

City/State/Zip: _____

Email: _____

To ensure that your comments become part of the official meeting record, they should be post marked within ten calendar days following this meeting (by 4/10/16).